

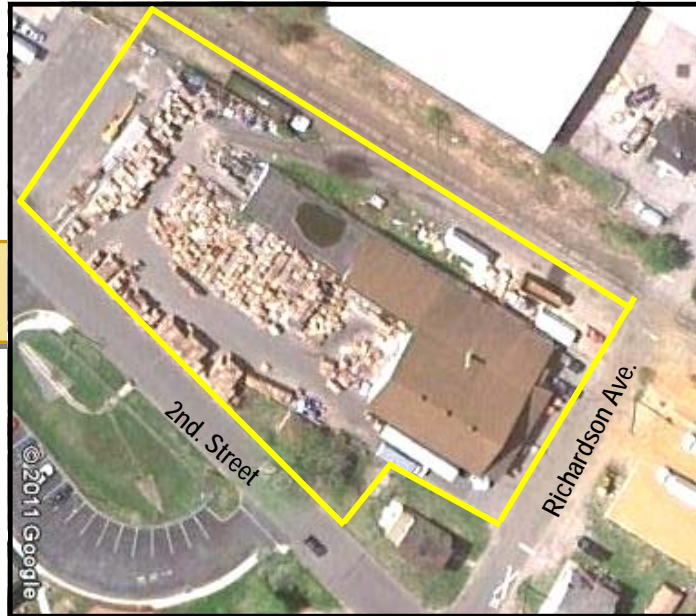
**The
PRESTIGE
GROUP**
REALTORS®

FOR SALE

610-902-3900

FOR SALE COMMERCIAL PROPERTY

1 Richardson Avenue
Swedesboro, New Jersey 08085



- 11,000+/-sf Commercial Building
- 1+/- Acre Lot
- 120' Frontage x 350" Depth
- 9' - 12' Ceilings
- 3 Phase Electrical Power
- Two Drive-in Doors
- Tailgate Loading Platform with 2 Positions
- Fluorescent Lighting
- Currently Used as Wooden Pallet Fabrication Business

Located Minutes from Intersection of
Route 322 & Kings Highway

Arthur Deussing

Vice President

ADeussing@PrestigeGroup.com

609.458.3188 Cell

610.902.3900

www.PrestigeGroup.com

Serving Pennsylvania, New Jersey and Delaware

This Information is Deemed Accurate Though Subject to Errors and Omissions