

*Local, National & International Connections With Local Representation*



FULL SERVICE  
COMMERCIAL  
REAL ESTATE  
BROKERAGE

- MULTI-FAMILY
- COMMERCIAL
- INDUSTRIAL
- INVESTMENT
- LAND & NEW HOME DEVELOPMENT
- SENIOR HOUSING & HEALTH CARE PROPERTIES
- BUYER/TENANT REPRESENTATION
- REAL ESTATE CONSULTATION SERVICES & CAPITAL MARKETS FINANCING



**PENNSYLVANIA • NEW JERSEY • DELAWARE • MARYLAND • NEW YORK • MASSACHUSETTS**

321 S Valley Forge Road, Devon, PA 19333 • 610.902.3900 or 800.866.5876 • [PrestigeGroup.com](http://PrestigeGroup.com)

## MISSION STATEMENT

**Prestige Group's** commitment to unparalleled excellence to our clients is our main goal. We are dedicated to providing our clients professionalism in commercial real estate sales, marketing and real estate consultation through teamwork, creativity, continued education, technology and a vigilant eye on market trends to enable us to be on the cutting edge of the market place.

## PURPOSE

### We Specialize in the Sales and Marketing of:

Multi-Family Properties • Investment Properties • Commercial & Industrial Buildings  
Senior Housing & Health Care Properties • Land & New Home Developments  
Office Buildings • Buyer/Tenant Representation • Real Estate Consultation

## GOAL

Our Goal is to Respond to our Clients' Needs and Build  
Long Term, Trust Based Client Relationships







## COMMERCIAL REAL ESTATE SERVICES

### ACQUISITION, SALES AND LEASING

#### Areas of Concentration Include:

- ▶ Multi-Family Properties
- ▶ Commercial Properties
- ▶ Investment Properties
- ▶ Flex / Industrial Space
- ▶ Commercial / Industrial Land
- ▶ Office Building Sales
- ▶ Commercial / Retail Leasing
- ▶ Senior Housing & Healthcare Related Properties
- ▶ Real Estate Consultation
- ▶ Capital Markets Financing



### ***HISTORY***

**Prestige Group** was founded by Richard B. Natow in 1987.

Through ingenuity, creativity and entrepreneurial thinking, Prestige Group has flourished!

An independently owned and operated company, Prestige Group has the flexibility to adapt to meet the demands of the ever changing market.

### ***OUR RECORD HAS BEEN OVERWHELMING!***

**Prestige Group** has been the recipient of several major industry awards as well as having been honored twice by The Philadelphia Business Journal as one of the "Philadelphia Top 100". Due to outstanding sales, The Wharton School of The University of Pennsylvania twice chose Prestige Group as one of the fastest growing private firms in the Philadelphia region. A unique distinction is that Prestige Group is noted to be the only real estate firm to receive this prestigious honor.

In addition, Prestige Group has been approved by the Bankruptcy Court of the United States of America to coordinate the sale and marketing of multi-family properties.

Licensed in Pennsylvania, New Jersey, Delaware, Maryland, New York and Massachusetts, our centrally located office in Devon, Pennsylvania provides easy access to the entire region.



## WHO WE ARE

### THE PRESTIGE TEAM



With over 150 years of combined experience and talent, the principals, senior management, sales team and administrative staff of Prestige Group have diverse real estate backgrounds and technical skills. This blend of perspectives and capabilities greatly contributes to the consistency of our success and growth.

Prestige Group is dedicated to providing value-added professional real estate services to our clients and associates in the most effective and responsive manner through teamwork, integrity and creativity, with a commitment to excellence on a daily basis.

We are committed to provide a work environment which promotes and respects individual potential and contributions of our staff. Our support and fostering of employee involvement enable Prestige Group to continue to be a leader in the field of commercial real estate.



## THE PRESTIGE TEAM

**Richard Natow**, *President and Founder*

*RNatow@PrestigeGroup.com*

*610.348.7400 Cell*

Richard is true to the entrepreneurial spirit!

Richard's diverse real estate background gives him an understanding of the entire scope of the real estate industry. He has extensive experience in sales, marketing, investment property ownership and management, as well as building and development.

Richard has an uncanny intuition for knowing what's ahead for the industry. His remarkable insight into people and "the art of the deal" is key to the success of the Prestige Group and its' clients. An open door policy with management, sales and administrative departments allows for a collaboration of ideas and problem solving techniques.

Richard is highly respected and admired by his peers. He is the recipient of numerous Pyramid Awards for Sales Manager of the Year and Marketing Manager of the Year by the Sales and Marketing Council of the Home Builders Association of Chester and Delaware Counties. He has also been honored by being a judge for various Builders Associations' Awards.

Richard's unique perspective is the driving force behind the growth and success of Prestige Group.



**RICHARD NATOW**  
President



## THE PRESTIGE TEAM

### **Bob Cohen**, Executive Vice President

*BCohen@PrestigeGroup.com • 610.299.9091 Cell*

#### *Director of the Consulting & Financing Divisions*

Prior to Bob's appointment to Director of Consulting, he spent 10 years as Senior VP of the Commercial Brokerage Division. Under his guidance and direction 185 transactions settled and \$350+ million in gross sales revenues were generated. Bob, a licensed Real Estate Broker has a vast real estate background with extensive experience in negotiations, acquisition of all investment asset classes, financing, management, as well as substantial investment real estate ownership.

The combination of Bob's attributes over a 35 year career has enabled him to concentrate on ALL aspects of the broad based real estate business. The result makes him uniquely qualified to direct the operations of our consulting and financing divisions.

A consummate professional, Bob is a leader in the consulting and financing field. His tenacity and dedication to helping his clients is always his number one goal!



**BOB COHEN**  
Executive  
Vice President



**ARTHUR DEUSSING**

Executive  
Vice President

### **Arthur Deussing**, Executive Vice President

*ADeussing@PrestigeGroup.com • 609.458.3188 Cell*

Arthur brings extensive commercial real estate sales and financial advisory experience to Prestige Group.

Arthur previously worked for a national commercial real estate company where he received many awards and accolades, including the prestigious "Most Square Footage Leased/Sold" in a single year.

Arthur specializes in the sales and leasing of industrial and commercial properties. He is the director of our Industrial and Commercial sales team. He leads by example. His strong work ethic, attention to detail and commitment to excellence make him one of the best in the industry.

His financial consulting experience is a great asset in helping his clients reach their goals.

He holds a Bachelor of Arts degree from Rutgers University.

Arthur is a licensed salesperson in both Pennsylvania and New Jersey and is a member of the Tri-County Suburban Realtors Association.



## THE PRESTIGE TEAM

### **Jon Mirsky**, Vice President

*JMirsky@PrestigeGroup.com • 610.212.8344 Cell*

Jon specializes in the sales and marketing of investment, multi-family and mixed-use properties. Jon brings a strong background of corporate real estate experience to Prestige Group. His experience in retail site selection for a major national retailer and management of a 20 property portfolio is invaluable to his brokerage clients.

A graduate of Temple University with a concentration in Communications, Jon is a life-long resident of suburban Philadelphia. He is a member of the Tri-County Suburban Realtors Association.

Jon's professionalism is enhanced by his warm approachable style.



**JON MIRSKY**  
Vice President



**JOE SHALLOW**  
Vice President

### **Joe Shallow**, Vice President

*JShallow@PrestigeGroup.com • 610.701.1133 Cell*

Joe specializes in the complex field of sales and marketing of senior housing and healthcare properties. Joe is committed to building lasting relationships with his clients.

A native of the Main Line of Philadelphia, Joe attended Cabrini College where he earned a Bachelor of Science degree in Business and a minor in Marketing. Joe has earned the coveted and highly respected rank of Eagle Scout.

He brings the same level of determination, resolve and integrity needed to become an Eagle Scout to his real estate profession.

Joe has been a guest lecturer on entrepreneurship and business on the college level. He spends his personal time doing many philanthropic activities as well as coaching a local lacrosse team.

Joe is a member of Tri-County Suburban Realtors Association.





## THE PRESTIGE TEAM

### **Sajan Shah**, Senior Sales Associate

*SShah@PrestigeGroup.com • 609.634.8735 Cell*

Saj specializes in the sales and marketing of investment and multi-family properties.

Saj began his career with Prestige Group as Sales Support and transitioned to sales; first as a Junior Sales Associate to his current role of Senior Sales Associate.

Saj's original position as sales support laid a solid groundwork for his sales career. He has hands on experience in helping get a deal done; from detailed research, analysis and assessment of business opportunities as well as understanding client's goals and objectives.

Local to the Philadelphia area, Saj earned his Bachelor of Arts in Business from Temple University.

Saj holds a real estate license in Pennsylvania and New Jersey and is the office liaison to the Tri-County Suburban Realtors Association.



**SAJAN SHAH**

Sr Sales Associate



**SHELBY SIMMONS**

Vice President  
Project Coordinator

### **Shelby Simmons**, Vice President of Operations & Project Coordinator

*SSimmons@PrestigeGroup.com • 610.405.7400 Cell*

Shelby is responsible for overall team coordination. She directs marketing efforts, manages the administrative and settlement coordination departments to keep the transaction on track as well as being responsible for the financial administration of Prestige Group.

Shelby's corporate sales background, and degree in Communications with a concentration in advertising, give her a unique perspective in the management of Prestige Group. Shelby's well rounded experience is advantageous to fulfilling our client's goals of a successful transaction. In over 25 years at Prestige Group, Shelby has been involved in all facets of managing, marketing and coordination of projects.

Shelby understands the complexities and nuances involved in Commercial real estate sales. Her goal is to guide the team to provide our clients with personalized service and results oriented solutions.



## THE PRESTIGE TEAM

### **Debby Weinstein**, Settlement Coordinator

*DWeinstein@PrestigeGroup.com • 610.902.3939 X104*

Debby's legal background is a crucial component in her role as Settlement Coordinator. Knowledge of the complex issues involved with property settlements is critical in the navigation of a successful transaction.

Disciplined, determined and highly organized, Debby possesses the necessary skills to effectively manage the settlement process.



**DEBBY WEINSTEIN**  
Settlement Coordinator



### **Francine Brodeur**, Executive Assistant

*Francine@PrestigeGroup.com • 610.902.3939 X100*

Francine has the challenging job of balancing administrative duties, sales support and graphic design/marketing projects as well as being at the center of it all!

Francine brings a diverse skill set to efficiently handle the variety of duties she encounters on a daily basis. She has a BFA in Advertising from Moore College of Art and over 25 years working in the design/marketing field. This along with her office management experience make Francine an integral part of the Prestige Group team.

Francine's professionalism and gracious style is a benefit to our sales staff as well as our clients.

**FRANCINE BRODEUR**  
Executive Assistant



## THE PRESTIGE BENEFIT

### *A Full Service Real Estate Organization Ready to Assist the Needs of Our Clients*

#### **Selling a Property**

Our organization stands ready to market and sell commercial, multi-family, investment, industrial, senior housing and healthcare properties using a myriad of tools from presence on the Internet, print advertising, direct mail marketing campaigns as well as broker cooperation.

#### **Buying a Property**

The Prestige Team is geared to finding commercial properties for Buyers. Our creative use of our in-house data base of commercial, industrial and investment properties, use of technology and good old fashioned hard work brings satisfaction to our clients.

#### **Property Evaluation**

Through experience, market knowledge and the latest in comparable technology, we are able to provide Buyers and Sellers with accurate property values. Accurately pricing a property is the first step to a timely sale.

#### **Financing**

Prestige Group has the experience and expertise to help Buyers and Sellers through the financing process. Our knowledge and creativity help get the deal done!

#### **Settlement Services**

Under the professional direction of Debby Weinstein our settlement department is equipped to provide all of the services necessary for a successful settlement. Experienced with dealing with all aspects of settlement from title issues, mortgage commitments to property inspection issues. The Prestige Group settlement department has been the unsung hero in the successful completion of many deals!

#### **Real Estate Consultation**

Our Consultation Services are tailored to the specific needs of our Clients. We are retained to offer objective, responsible counsel to help our Clients make the best decision to reach their needs and goals.

#### **Zoning/Land Use Issues**

Prestige Group will assist you with zoning, land use, change of use and other issues which may arise. Our experience with working with Townships, Boroughs, Counties, and government regulatory agencies can be a great benefit to the Buyer/Tenant's ability to obtain the proper permits, zoning, etc., needed for a successful transaction.

#### **Buyer/Tenant Representation**

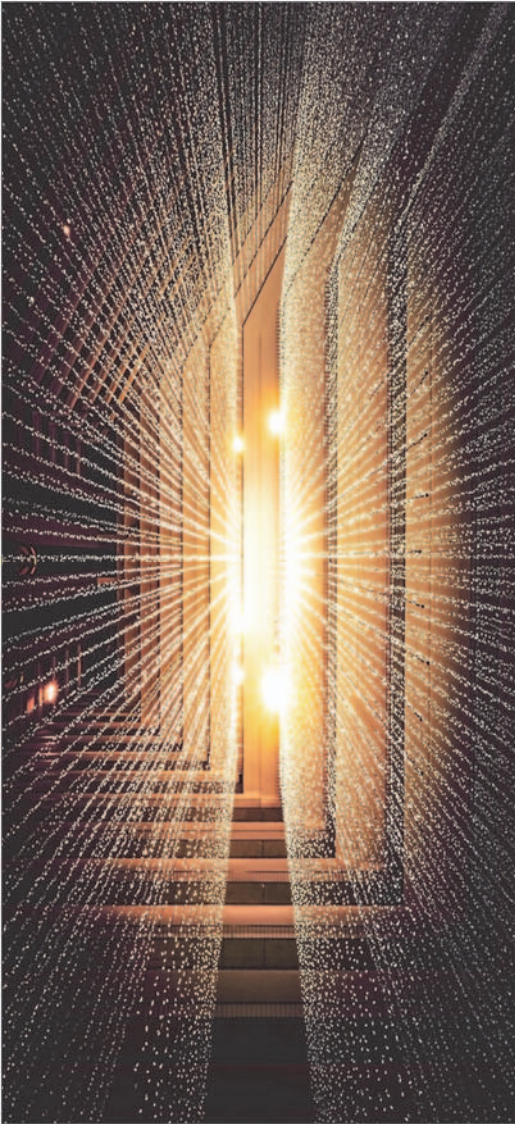
We are prepared to collaborate with you and find the best real estate for your needs. We will work with you on an exclusive basis and represent your best interests during the entire process of searching for a property, agreement of sale preparation, due diligence, through settlement.

#### **1031 & Tenant in Common (TIC) Tax Deferred Exchanges**

The Prestige Team understands the complexities and strategies needed for a successful 1031 or Tenant in Common (TIC) tax deferred exchange. Time being of the essence, Prestige Group works diligently to complete the transactions.

#### **Administrative Staff**

The Prestige Group Team of sales people are supported by the finest, most professional administrative staff in the industry. Headed by Shelby Simmons, Vice President of Operations, the administrative staff is knowledgeable and experienced in all aspects of the deal from searching for properties, marketing and advertising to the most detailed and efficient settlement department. The administrators are a key ingredient to the success of the Prestige Team.



Prestige Group is committed to professionalism through technology, education and old fashioned no-nonsense hard work!

We can search for properties or market properties for sale worldwide through our memberships in various commercial real estate sites and data bases.

Our membership in the Multiple Listing Services and various Realtor Associations ensures exposure of a property to the brokerage community in addition to the public.

Our in-house data base of commercial and industrial properties enables us to target market and/or mass market when doing a property search or marketing a listing.

We utilize the most current sources for property comparables to accurately value properties.

Professionally prepared digital and print brochures are created for all of our commercial, industrial and investment property listings.





*A "Boutique Brokerage Firm," Prestige Group is  
Uniquely Positioned to Fulfill All of Your Commercial,  
Investment and Industrial Real Estate Needs!*

Our specialized niche enables us to focus on the business and financial markets and their impact on the real estate market.

The synergy of our dynamic sales force and administrative staff creates a cohesive atmosphere conducive to successful business.

*We Stand Ready to Collaborate with You  
and Accomplish Our Mission  
By Fulfilling Your Real Estate Goals.*



*Prestige Group... Committed to Our Clients*

## **SOLD** – MULTI-FAMILY APARTMENTS

### **Northpoint Apartments**

204 Units  
Bensalem, PA

### **Presidential Square Apartments**

198 Units  
Secane, PA

### **Imperial Plaza**

183 Units  
Bala Cynwyd, PA

### **Indian Run Apartments**

160 Units  
Bridgeton, NJ

### **Shaminy Brook Apartments**

160 Units  
Bensalem, PA

### **Beekman Place Apartments**

135 Units  
Bala Cynwyd, PA

### **Llangolan Court Apartments**

120 Units  
New Castle, DE

### **Mill Spring Apartments**

126 Units  
Sharon Hill, PA

### **Bethayres Apartments**

115 Units  
Lower Moreland, PA

### **Drexel Court Plaza**

108 Units  
Drexel Hill, PA

### **Brookside Square Apartments**

92 Units  
Bensalem, PA

### **Salem Village Apartments**

80 Units  
Bensalem, PA

### **Glenmore Apartments**

90 Units  
Clifton Heights, PA

### **Brandywine Gardens Apartments**

62 Units  
West Chester, PA

### **Marshall Square Apartments**

66 Units  
West Chester, PA

### **Elm Court Apartments**

60 Units  
Pottstown, PA

### **640 South Avenue**

203 Units  
Secane, PA

### **Cornerstone Court Apartments**

56 Units  
Morton, PA

### **Morton Station Apartments**

56 Units  
Morton, PA

### **Eagle Manor Apartments**

46 Units  
Havertown, PA

### **Ath-Dara Apartments**

50 Units  
West Chester, PA

### **Eagle Court Apartments**

44 Units  
Lansdowne, PA

### **Bradford Hall Apartments**

44 Units  
Havertown, PA

### **Glenmore Part West Apts**

34 Units  
Folsom, PA

### **Bradford Terrace Apartments**

34 Units  
Clifton Heights, PA

### **Chestnut Village Apartments**

24 Units  
Downingtown, PA

### **Dalmonst Apartments**

30 Units  
Yeadon, PA

### **Cedar Court Apartments**

18 Units  
Lansdowne, PA

### **Dalshire Apartments**

20 Units  
Prospect Park, PA

### **James Street Apartments**

11 Units  
Drexel Hill, PA

### **Penn Street Apartments**

16 Units  
West Chester, PA

### **Elmwood Gardens Apartments**

67 Units  
Coatesville, PA

### **Lafayette West Townes**

11 Units  
West Chester, PA

### **Ravenswood Apartments**

28 Units  
Philadelphia, PA

### **Morelane Gardens Apartments**

22 Units  
Philadelphia, PA

### **Wadsworth Manor Apartments**

**Elkins Court Apartments**  
**Robert Court Apartments**

176 Units  
Philadelphia, PA

### **Treeview Manor Apartments**

68 Units  
Philadelphia, PA

### **Dean Street Apartments**

10 Units  
West Chester, PA

### **17 South Roberts Road**

8 Units  
Bryn Mawr, PA

### **Woodcrest Place**

9 Units  
Newtown Square, PA

### **Claremont Apartments**

21 Units  
Haverford, PA

### **Minerva Court Apartments**

63 Units  
Upper Darby, PA

### **St. Albans Apartments**

20 Units  
Newtown Square, PA

### **Barbara Court**

37 Units  
Drexel Hill, PA

### **Morgan Place**

12 Units  
Drexel Hill, PA

### **Oak Grove Apartments**

36 Units  
Chester, PA

### **Narberth Hall Apartments**

60 Units  
Narberth, PA

### **Garrett Place**

28 Units  
Drexel Hill, PA

### **Kenwyn Apartments**

44 Units  
Philadelphia, PA

### **Bryn Mawr Apartments**

35 Units  
Philadelphia, PA

### **Treeview Manor Apartments**

68 Units  
Philadelphia, PA

### **Dean Street Apartments**

10 Units  
West Chester, PA

### **Oak Grove Apartments**

36 Units  
Chester, PA

### **Narberth Hall Apartments**

60 Units  
Narberth, PA

### **Dorian Court**

80 Units  
Chester, PA

**Local, National & International Connections • Licensed in Pennsylvania, New Jersey, Delaware, Maryland, New York, Massachusetts**

321 S Valley Forge Road, Devon, PA 19333 • 610.902.3900 or 800.866.5876 • PrestigeGroup.com



*Prestige Group... Committed to Our Clients*

## **SOLD** – MULTI-FAMILY APARTMENTS

**Woodcrest Place**

9 Units  
Newtown Square, PA

**Huntingdon Green**

86 Units  
Westtown, PA

**Norwood Court Apartments**

99 Units  
Philadelphia, PA

**Tremont Terrace Apartments**

60 Units  
Norristown, PA

**The Toland House**

22 Units  
Philadelphia, PA

**Neshaminy Woods**

615 Units  
Bucks County, PA

**The Woods**

326 Units  
Montgomery County, PA

**Interfaith Heights**

215 Units  
Wilkes-Barre, PA

**St. James Place**

212 Units  
Delaware County, PA

**Audubon Estates**

120 Units  
Philadelphia, PA

**Lakeside Estates**

112 Units  
Berks County, PA

**The Chocolate Factory**

110 Units  
Philadelphia, PA

**Chet-Wayne**

107 Units  
Philadelphia, PA

**McCallum Manor**

86 Units  
Philadelphia, PA

**Center Post Village**

84 Units  
Philadelphia, PA

**Linden Court**

81 Units  
Philadelphia, PA

**Washington Lane**

75 Units  
Philadelphia, PA

**Brandywine Manor**

60 Units  
Delaware County, PA

**Kemble Park**

50 Units  
Philadelphia, PA

**Valley Stream**

46 Units  
Delaware

**Wayne-Iris**

42 Units  
Philadelphia, PA

**Eola Park**

42 Units  
Philadelphia, PA

**4807 Chester Avenue**

40 Units  
Philadelphia, PA

**Fraley Court**

40 Units  
Montgomery County, PA

**Rosemary Lane**

40 Units  
Philadelphia, PA

**Fairdale Court**

40 Units  
Philadelphia, PA

**Chester Arms**

40 Units  
Philadelphia, PA

**Academy Manor**

40 Units  
Philadelphia, PA

**Mayfair Court**

33 Units  
Philadelphia, PA

**Roosevelt Court**

32 Units  
Philadelphia, PA

**7100 Ogontz Avenue**

30 Units  
Philadelphia, PA

**The Winchester**

29 Units  
Philadelphia, PA

**The Lancaster**

25 Units  
Philadelphia, PA

**4605 Leiper Street**

22 Units  
Philadelphia, PA

**Medeso Manor**

56 Units  
Baltimore, MD

**301-305 S. Broad Street**

5 Units & 3 Retail Stores  
Woodbury, NJ

**Verna Apartments**

8 Units  
Mt. Ephraim, NJ

**4400 Pacific Avenue**

3 Units  
Wildwood, NJ

**Crosby Square**

81 Units  
Chester, PA

**University City Apts.**

34 Units  
Philadelphia, PA

**"M" Street Apartments**

20 Units  
Philadelphia, PA

**Jackson Court**

28 Units  
Philadelphia, PA

**Cedar Knoll Apartment**

18 Units  
Prospect Park, PA

**Mannco Manor**

Assisted Living  
Emmaus, PA

**Loretta Arms Apartments**

30 Units  
Philadelphia, PA

**Ash Park Apartments**

75 Units  
Coatesville, PA

**409-413 S. 42nd Street**

34 Units  
Philadelphia, PA

**Stanbridge Apartments**

17 Units  
Norristown, PA

**Apartments for Modern Living**

95 Units  
West Chester, PA

**3417-23 Welsh Road**

8 Units  
Philadelphia, PA

**Prescott House**

50 Units  
Upper Darby, PA

**Atlantic City / Berkley Gardens**

178 Units  
Atlantic City, NJ

**Dalmont Apartments**

30 Units  
Yeadon, PA

**425 Fairbanks Avenue**

5 Units & 2 Garages  
Northfield, NJ

**Priscilla Apartments**

24 Units  
Allentown, PA

**Local, National & International Connections • Licensed in Pennsylvania, New Jersey, Delaware, Maryland, New York, Massachusetts**

321 S Valley Forge Road, Devon, PA 19333 • 610.902.3900 or 800.866.5876 • PrestigeGroup.com



*Prestige Group... Committed to Our Clients*

## **SOLD** – MULTI-FAMILY APARTMENTS

### **Magnolia Park**

48 Units  
Camden, NJ

### **Suburban Court Apartments**

95 Units  
Ardmore, PA

### **Cra-West Apartments**

22 Units  
Camden, NJ

### **Jefferson Street Apartments**

12 Units  
Allentown, PA

### **Rheems Nursing Assisted Living Facility**

92 Beds plus apartment  
Rheems, PA

### **101 High Street**

4 Units  
Woodbury, NJ

### **142-146 S. Broad Street**

48 Apartment Units  
6 Retail Units  
Woodbury, NJ

### **104 S. Carol Boulevard**

3 Units  
Upper Darby, PA

### **278 N. Lansdowne Avenue**

4 Apartment Units  
2 Commercial Units  
Lansdowne, PA

### **5335-5341 Baynton Street**

10 Units  
Philadelphia, PA

### **Trenton Apartment Portfolio**

77 Apartment Units  
Trenton, NJ

### **Regina Nursing Center**

80 Bed Skilled Nursing  
Philadelphia, PA

### **Regency Park Assisted Living**

62 Beds  
Gambriels, MD

### **Colonial Hall**

138 Bed Assisted Living  
Lancaster, PA

### **2253 Garrett Road**

3 Units & 2 Retail  
Upper Darby, PA

### **Newfield Apartments**

15 Apartment Units  
Newfield, NJ

### **231 S. 51<sup>st</sup> Street**

23 Apartment Units  
Philadelphia, PA

### **Circle Apartments**

10 Units & 1 Retail  
Willingboro, NJ

### **Ida Russell Fillis Assisted Living**

24 Beds  
Philadelphia, PA

### **56 S. Morton Avenue**

17 Apartment Units  
Springfield, PA

### **The Mansion**

6 Apartment Units  
West Deptford, NJ

### **Marshall Square**

66 Apartment Units  
West Chester PA

### **Ashley Court**

65 Units  
Clementon, NJ

### **Brightfield Assisted Living**

165 Beds  
Hatfield, PA

### **Merion Manor**

Units  
Merion, PA

### **Lorraine Village**

250 Units  
St.Croix, U.S.Virgin Islands

### **Oak Valley Apartments**

Units  
Clementon, NJ

### **"M" Street Apartments**

Units  
Philadelphia, PA

### **Millville Apartment Portfolio**

41 Apt Units & 1 Retail Unit  
Millville, New Jersey

### **Gardens at Cross Keys**

109 Bed Assisted Living Facility  
Washington Township, NJ

### **Chester City Apartment Portfolio**

14 Apartment Units  
Chester, PA

### **1836 Green Street**

Assisted Living Facility  
Philadelphia, PA

### **Chestnut Hill Manor**

61 Bed Assisted Living Facility  
& Dementia  
Brodheads ville, PA

### **111 Pennsylvania Avenue**

5 Apartment Units  
Yardley, PA

### **Baird Court Apartments**

18 Apartment Units  
Hamilton, NJ

### **2835 S. Broad St & 70 Miles Avenue**

7 Apartment Units  
Hamilton, NJ

### **29 E. Jefferson Street**

5 Unit Building  
Media, PA

### **Morrisville Portfolio**

20 Units  
Morrisville, PA

### **141 Howard Avenue**

6 Units  
South Bound Brook, NJ

### **11-17 Black Horse Pike**

18 Units  
Haddon Heights, NJ

### **1038 Brunswick Avenue**

12 Units  
Trenton, NJ

### **Alden House**

12 Units  
Perkasie, PA

### **1971 Ridge Pike**

6 Units  
Norristown, PA

### **Franklin Arms**

10 Units  
Mt. Ephraim, NJ

### **123-125 Legion Avenue**

6 Units  
Morrisville, PA

### **331 W. Clayton Ave**

9 Units  
Clayton, NJ

### **Parvins Branch**

**101-103 E. Baltimore Avenue**  
7 Units & Body Shop  
Lansdowne, PA

### **Suzanne Apartments**

7 Units  
Annandale, NJ

### **Parvins Branch Apartments**

24 Units  
Vineland, NJ

### **1209-11 Kings Highway**

5 Units  
Swedesboro, NJ

### **Stone & Atlantic Apartments**

12 Units  
Laurel Springs, NJ

### **4616 Leiper Street**

47 Units  
Philadelphia, PA

### **Hallowell Court**

17 Units  
Conshohocken, PA

### **100 E. Holly Street**

5 Units  
Oaklyn, NJ

**Local, National & International Connections • Licensed in Pennsylvania, New Jersey, Delaware, Maryland, New York, Massachusetts**

321 S Valley Forge Road, Devon, PA 19333 • 610.902.3900 or 800.866.5876 • PrestigeGroup.com





*Prestige Group... Committed to Our Clients*

## **SOLD** – HEALTH CARE FACILITIES

**Mannco Manor**

42 Bed Assisted Living Facility  
Emmaus, PA

**Colonial Hall**

148 Bed Assisted Living Facility  
Lancaster, PA

**Rheems Nursing Center**

65 Bed Skilled Nursing Facility  
Rheems, PA

**Regina Nursing Center**

80 Bed Skilled Nursing Facility  
Philadelphia, PA

**Regency Park Assisted Living**

65 Bed Assisted Living Facility  
Gambrells, MD

**Chestnut Hill Manor**

48 Bed Assisted Living Facility  
& Alzheimer Facility  
*Plus Land to Construct 200  
Bed Continuing Care Center*  
Brodheadsville, PA

**Bethesda Court**

128 Bed Assisted Living Facility  
Philadelphia, PA

**West Reading Inner Circle**

78 Bed Assisted Living Facility  
West Reading, PA

**Brightfield Assisted Living**

146 Bed Assisted Living Facility  
Hatfield Township, PA

**The Gardens at Cross Keys**

106 Bed Assisted Living Facility  
Washington township, NJ

**Ida Russell Fillis**

38 Bed Assisted Living Facility  
Philadelphia, PA

**Anna Erika**

427 Bed Adult Home  
& Assisted Living Facility  
Staten Island, NY

**Morris-Pace**

30 Bed Assisted Living Facility  
Philadelphia, PA

**Anchor Inne**

39 Bed Assisted Living Facility  
Erie County, PA

**Colonial Courtyard 1**

55 Bed Assisted Living Facility  
Clearfield, PA

**Colonial Courtyard 2**

44 Bed Assisted Living Facility  
Tyrone, PA

**Colonial Courtyard 3**

78 Bed Assisted Living Facility  
Bedford, PA

**Gracious Living Estates**

65 Bed Assisted Living Facility  
Montrose, PA

**Serenity Pines Personal Care**

26 Bed Personal Care Home  
Bridgeville, PA

Local, National & International Connections • Licensed in Pennsylvania, New Jersey, Delaware, Maryland, New York, Massachusetts

321 S Valley Forge Road, Devon, PA 19333 • 610.902.3900 or 800.866.5876 • PrestigeGroup.com



*Prestige Group... Committed to Our Clients*

## **SOLD** – COMMERCIAL, INDUSTRIAL, OFFICE & RETAIL PROPERTIES

**701 Montgomery Avenue**  
12,000 SF  
Merion, PA

**137 Montgomery Avenue**  
2,000 SF  
Bala Cynwyd, PA

**911 Montgomery Avenue**  
2,800 SF  
Penn Valley, PA

**3510 West Chester Pike**  
10,000 SF  
Newtown Square, PA

**921 Montgomery Avenue**  
2,000 SF  
Penn Valley, PA

**2551-2555 West Chester Pike**  
Retail Space with Apartments  
Broomall, PA

**268 West DeKalb Pike**  
13,500 SF  
King of Prussia, PA

**260 West DeKalb Pike**  
4,000 SF  
King of Prussia, PA

**24-26 East Lancaster Avenue**  
Retail Building  
Ardmore, PA

**Frankford Avenue**  
Retail Building  
Philadelphia, PA

**625 Montgomery Avenue**  
General Wayne Inn  
Narberth, PA

**859 Montgomery Avenue**  
Office  
Merion, PA

**1501 Paoli Pike**  
4 acres for Retail Development  
East Goshen, PA

**763 West Lancaster Avenue**  
1.6 Acres for  
Retail Development  
Bryn Mawr, PA

**Route 252**  
1.8 Acres for Development  
Broomall, PA

**Fairway Plaza Building**  
70,000 SF  
Lower Moreland, PA

**Constitution Building**  
20,000 SF  
Bensalem, PA

**Century 21 Spa**  
12,000 SF  
West Chester, PA

**G & M Building**  
17,000 SF  
Chadds Ford, PA

**107 South Church Street**  
5,000 SF  
West Chester, PA

**SunLife Building**  
10,000 SF  
Chadds Ford, PA

**Barclay Farm Shopping Center**  
120,000 SF  
Cherry Hill, NJ

**Uptown Shopping Center**  
150,000 SF  
Harrisburg, PA

**Concord Village Shops**  
30,000 SF  
Concord, PA

**Town and Country  
Shop Center**  
100,000 SF  
West Chester, PA

**Chestnut Hill Plaza**  
Shopping Center  
Chestnut Hill, PA

**West Norriton Square**  
Shopping Center  
West Norriton, PA

**1155 West Lancaster Avenue**  
Shopping Center  
Paoli, PA

**7 East Lancaster Avenue**  
Office Building & Retail  
Ardmore, PA

**929 Glenbrook Road**  
Office Building  
Bryn Mawr, PA

**920 West Sproul Road**  
Office Building  
Springfield, PA

**201 Wilmington  
West Chester Pike**  
4572 SF  
Chadds Ford, PA

**6000 Pennell Road**  
Industrial Building  
Aston, PA

**801 East Germantown Pike F-4**  
Office Condominium  
Norristown, PA

**1027 Conshohocken Road**  
38,000 SF Industrial Building  
Conshohocken, PA

**944 Haverford Road**  
Office Building  
Bryn Mawr, PA

**1100 Market Street**  
Retail Store  
Sharon Hill, PA

**1016 Oak Avenue**  
Commercial Building  
Croydon, PA

**1501 Powell Street**  
Retail Building  
Norristown, PA

**8101 Stenton Avenue**  
Retail Building  
Upper Darby, PA

**Local, National & International Connections • Licensed in Pennsylvania, New Jersey, Delaware, Maryland, New York, Massachusetts**

321 S Valley Forge Road, Devon, PA 19333 • 610.902.3900 or 800.866.5876 • [PrestigeGroup.com](http://PrestigeGroup.com)



*Prestige Group... Committed to Our Clients*

## **SOLD** – COMMERCIAL, INDUSTRIAL, OFFICE & RETAIL PROPERTIES

**210 Carter Drive**  
Industrial Park  
West Chester, PA

**1 Marlborough Road**  
Retail Store  
Upper Darby, PA

**Commons at West Chester**  
Flex Space  
West Chester, PA

**635 Louis Drive**  
27,075 SF  
Industrial Bldg 2.81 Ac  
Warminster, PA

**775 W. Moreland Road**  
Retail Showroom  
Willow Grove, PA

**775 American Drive**  
25,000 SF Industrial Warehouse  
Bensalem, PA

**2901 "B" Street**  
10,350 SF Industrial Building  
Philadelphia, PA

**1765 Walnut Lane**  
18,000 SF Industrial Building  
Quakertown, PA

**2414 American Street**  
25,000 SF Industrial Warehouse  
Bensalem, PA

**219 Race Street**  
3,800 SF Office Building  
Ambler, PA

**115 New Street**  
11,000 SF Office Building  
13,000 SF Lot  
Glenside, PA

**Frankford & Wormath Aves.**  
Warehouse Building  
Philadelphia, PA

**1765 Walnut Lane**  
Industrial Building  
Philadelphia, PA

**2230 Big Oak Avenue**  
Warehouse  
Langhorne, PA

**8829 New Falls Road**  
Commercial Property  
Levittown, PA

**Bodine Steet**  
Flex Building  
Philadelphia, PA

**N. 3rd. Street**  
Flex Building  
Philadelphia, PA

**4112 Kensington Avenue**  
Warehouse  
Philadelphia, PA

**933 S. High Street**  
Office Building  
West Chester, PA

**2800 Roberts Avenue**  
Warehouse  
Philadelphia, PA

**1501 N. 31st Street**  
Flex Space  
Philadelphia, PA

**1771 Tomlinson Road**  
Flex Space  
Philadelphia, PA

**4337 "G" Street**  
Warehouse  
Philadelphia, PA

**165-173 Ontario Street**  
27,000 SF Industrial Warehouse  
Philadelphia, PA

**3665 Richmond Street**  
17,000 SF Warehouse  
Philadelphia, PA

**1562 Wadsworth Avenue**  
4,400 SF Storefront  
Philadelphia, PA

**3400 W. Allegheny Avenue**  
5,000 SF Warehouse  
Philadelphia, PA

**3201 Fox Street**  
230,000 SF Warehouse  
Philadelphia, PA

**4075 Torresdale Avenue**  
3,000 SF Showroom & .4 Acre lot  
Philadelphia, PA

**4001-09 Paul Street**  
Industrial Building  
Philadelphia, PA

**4028 Orchard Street**  
Industrial Building  
Philadelphia, PA

**920-938 Lycoming Street**  
28,000+/- SF Warehouse  
Philadelphia, PA

**1936 West Point Pike**  
17,000+/- SF Office Building  
Lansdale, PA

**Local, National & International Connections • Licensed in Pennsylvania, New Jersey, Delaware, Maryland, New York, Massachusetts**

321 S Valley Forge Road, Devon, PA 19333 • 610.902.3900 or 800.866.5876 • [PrestigeGroup.com](http://PrestigeGroup.com)



*Prestige Group... Committed to Our Clients*

## **LEASED** – COMMERCIAL, INDUSTRIAL, OFFICE & RETAIL PROPERTIES

**1420 Manoa Road**  
Retail Space  
Wynnewood, PA

**1428 Manoa Road**  
Retail Space  
Wynnewood, PA

**920 Sproul Road**  
Office Space  
Springfield, PA

**668 Davisville Road**  
Office/Flex Space  
Willow Grove, PA

**707 Montgomery Avenue**  
Office/Retail Space  
Narberth, PA

**1116 MacDade Boulevard**  
Commercial Space  
Ridley Park, PA

**7 East Lancaster Avenue**  
Restaurant  
Ardmore, PA

**Station Avenue**  
Office Space  
Haverford, PA

**32 Chestnut Street**  
Office Space  
Paoli, PA

**1304 Conshohocken Road**  
Commercial Space  
Conshohocken, PA

**201 Bala Avenue**  
Office/retail Space  
Bala Cynwyd, PA

**731 Montgomery Avenue**  
Office Space  
Narberth, PA

**551 West Lancaster Avenue**  
Office Space  
Haverford, PA

**139 East DeKalb Pike**  
Retail Space  
King of Prussia, PA

**182 East DeKalb Pike**  
Office Space  
King of Prussia, PA

**192 East DeKalb Pike**  
Office Space  
King of Prussia, PA

**196 East DeKalb Pike**  
Retail Space  
King of Prussia, PA

**198 Allendale Road**  
Office/Flex Space  
King of Prussia, PA

**580 West Germantown Pike**  
Office Flex Space  
Plymouth Meeting, PA

**16 Haverford Station Road**  
Office/Retail  
Haverford, PA

**Edgmont Shopping Center**  
Retail Space  
Edgmont, PA

**732 West Lancaster Avenue**  
Office Space  
Wayne, PA

**Brookwood Shopping Center**  
Retail Space  
Lionville, PA

**275 Commerce Drive**  
Flex Space  
Fort Washington, PA

**250 Lancaster Avenue**  
Office Space  
Paoli, PA

**Canal Street**  
Flex/Warehouse Space  
Bristol, PA

**West Chester Pike**  
Warehouse  
Newtown Square, PA

**Ivyland Road**  
Flex/Warehouse  
Warminster, PA

**734 Lancaster Avenue**  
Office Space  
Villanova, PA

**Main Street**  
Retail Space  
Pottstown, PA

**Grundy Commons**  
Flex/Warehouse Space  
Bensalem, PA

**Shanti Towers**  
Office Space  
Pottstown, PA

**204 Baltimore Pike**  
Restaurant  
Edgmont, PA

**4301 Delaware Avenue**  
25,000 sf Industrial Warehouse  
Philadelphia, PA

**1 Collins Drive**  
28,500 sf Class "A" Office Space  
Carneys Point, NJ

**320 Constance Drive**  
Flex Space Warminster, PA

**6 E. Erie Avenue**  
Warehouse Space  
Philadelphia, PA

**340 Constance Dr**  
Flex Space  
Warminster, PA

**3950 Nebraska Avenue**  
Flex Space  
Newportville, PA

**240 New York Drive**  
Flex/Office Space  
Ft. Washington, PA

**653 Skippack Pike**  
Office Space  
Blue Bell, PA

**330 Jacksonville Road**  
20,000 sf Warehouse Space  
Warminster, PA

**5200 Comly Street**  
15,000 sf Truck Terminal Building  
Philadelphia, PA

**11500 Roosevelt Boulevard**  
10,000 sf Industrial Space  
Philadelphia, PA

**455 Business Center**  
9,000 sf Office Space  
Philadelphia, PA

**1327 Adams Road**  
5,000 sf Warehouse  
Bensalem, PA

**331 Maple Avenue**  
6,400 sf Warehouse/Showroom  
Horsham, PA

**8th Street and Maple Avenue**  
4,800 sf Commercial Building  
Lansdale, PA

**461 N. 3rd Street**  
2,500 sf Office  
Philadelphia, PA

**480 State Road**  
2,000 sf Office  
Bensalem, PA

**The Neshaminy Interplex**  
1,800 sf Office  
Neshaminy, PA

**1040 Pond Street**  
Office Lease  
Bristol, PA

**10 Canal Street**  
500 sf Office  
Bristol Borough, PA

**10 Canal Street**  
3363 sf Office  
Bristol Borough, PA

**801 New Rogers Road**  
Commercial/Showroom/  
Warehouse  
Bristol, PA

**Local, National & International Connections • Licensed in Pennsylvania, New Jersey, Delaware, Maryland, New York, Massachusetts**

321 S Valley Forge Road, Devon, PA 19333 • 610.902.3900 or 800.866.5876 • PrestigeGroup.com





*Prestige Group... Committed to Our Clients*

## **LEASED** – COMMERCIAL, INDUSTRIAL, OFFICE & RETAIL PROPERTIES

**805 N. Wilson Avenue**  
1,710 sf Office  
Bristol, PA

**1728 Welsh Road**  
Office Space  
Philadelphia, PA

**3000 Cabot Drive**  
6,972 sf Office  
Langhorne, PA

**815 Nina Way**  
Office Space  
Warminster, PA

**2512 Metropolitan**  
6,456 sf Flex Space  
Trevose, PA

**2180 Colfelsh Road**  
Warehouse  
Perkiomenville, PA

**3800 Marshall Lane**  
Warehouse/  
Manufacturing Bldg  
Bensalem, PA

**1707 Bustleton Pike**  
Warehouse  
Trevose, PA

**2522 State Road**  
Warehouse  
Bensalem, PA

**2522 State Road**  
Warehouse  
Bensalem, PA

**63 W. Trenton Avenue**  
Office  
Bristol, PA

**10 Canal Street**  
Suite 232 Office  
Bristol, PA

**10 Canal Street**  
Suite 336 Office  
Bristol, PA

**10 Canal Street**  
Suite 324 Office  
Bristol, PA

**63 W. Trenton Road**  
Office  
Bensalem, PA

**5825 Tacony Street**  
Parking Yard  
Philadelphia, PA

**8600 West Chester Pike**  
Office Suite 100  
Upper Darby, PA

**8600 West Chester Pike**  
Office Suite 230  
Upper Darby, PA

**1100 East Hector Street**  
Office  
Conshohocken, PA

**555 North Lane**  
Office  
Conshohocken, PA

**72 Lancaster Avenue**  
Office  
Malvern, PA

**6851 Marshall Road**  
Office  
Upper Darby, PA

**1410 Manning Blvd.**  
Commercial Land  
Levittown, PA

**5825 Tacony Ave**  
Parking Yard  
Philadelphia, PA

**2439 N. 3rd Street**  
Commercial Land  
Philadelphia, PA

**400 Feheley Drive**  
21,200 sf Flex Space  
King of Prussia, PA

**70 Lancaster Avenue**  
Office  
Malvern, PA

**882 Matlack Street,  
Suite 207**  
Office  
West Chester, PA

**1707 Bustleton Pike**  
2600 sf Warehouse  
Feasterville, PA

**1300 Adams Avenue**  
11,800 sf Warehouse  
Philadelphia, PA

**72 Lancaster Avenue**  
Office  
Malvern, PA

**Canals End - Suite 201B**  
Office  
Bristol Borough, PA

**412 Canal Street - Suite 202C**  
Office  
Bristol Borough, PA

**418 Mill Street - Unit 311**  
Flex-Office  
Bristol Borough, PA

**8701 Torresdale Avenue**  
Warehouse  
Philadelphia, PA

**7900 Radcliffe Street**  
Industrial Property  
Bristol, PA

**110 Penn Am Drive**  
Industrial Property  
Quakertown, PA

**2280 Amber Drive**  
Industrial Building  
Hatfield, PA

**Marshall St & Markley Sts.**  
Parking Lot  
Norristown, PA

**622 Mary Street**  
Industrial Space  
Warminster, PA

**130 E. Glenside Avenue**  
Flex Space  
Glenside, PA

**909 Ray Avenue**  
Warehouse Space  
Croydon, PA

**800 Haunted Lane**  
Flex Building  
Bensalem, PA

**2313 Duncan Street**  
19,000 sf Warehouse  
Philadelphia, PA

**4701 Bath Street**  
Industrial Property  
Philadelphia, PA

**1771 Tomlinson Road**  
Warehouse Space  
Philadelphia, PA

**210 Carter Drive Unit 5A**  
2,100 sf Flex Space  
West Chester, PA

**3580 Progress Drive**  
Flex Space  
Bensalem, PA

**2251 Fraley Avenue**  
Flex Space  
Philadelphia, PA

**1151 McDermott Drive**  
Office Space  
West Chester, PA

**2400 Venango Street**  
Warehouse  
Philadelphia, PA

**6225 State Road**  
15,500 sf Warehouse  
Philadelphia, PA

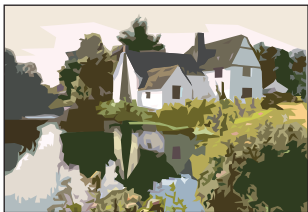
**2150 E. Westmoreland Street**  
13,800 sf Warehouse  
Philadelphia, PA

**1400 Adams Avenue—Unit 1**  
5,300 sf Warehouse  
Bensalem, PA

**201 N. Aberdeen Avenue**  
Office Lease  
Wayne, PA

**Local, National & International Connections • Licensed in Pennsylvania, New Jersey, Delaware, Maryland, New York, Massachusetts**

321 S Valley Forge Road, Devon, PA 19333 • 610.902.3900 or 800.866.5876 • [PrestigeGroup.com](http://PrestigeGroup.com)



*Prestige Group... Committed to Our Clients*

## **SOLD** – NEW HOME DEVELOPMENTS

### **Alderbrook**

21 Single Homes  
Wayne, PA  
S & S Development Co

### **Mayflower Square**

45 Condominiums  
Bryn Mawr, PA  
Mayflower Associates

### **Indian Creek Estates**

113 Single Homes  
Wynnewood, PA  
S & S Development Co.

### **Glenhardie Condominiums**

150+ Condominiums  
Wayne, PA  
Marc Equity

### **Bridlewood**

43 Single Homes  
Chester Springs, PA  
Dan Mullray

### **Nottingham Village Knollwood Village**

41 Townhomes  
Aston, PA  
S & S Development Co.

### **Cedar Knoll**

30 Single Homes  
Broomall, PA  
Peter Madonna &  
Paul Stefanik

### **Cedar Grove Farms**

146 Single Homes  
Broomall, PA  
S & S Development Co.

### **Wynnewood Valley**

10 Townhomes  
Wynnewood, PA  
Paul Stefanik

### **Cashel Court**

130 Condominiums  
Aston, PA  
S & S Development Co.

### **St. Andrews Brae**

43 Single Homes  
Glenmore, PA  
George Harlan

### **Springton Pointe**

43 Custom Homes  
Newtown Square PA  
Springton Pointe Associates

### **Radnor Place**

32 Condominiums  
Newtown Square, PA  
Radnor Survey Associates

### **Birchwood Condominiums**

45 Condominiums  
Upper Darby, PA  
Birchwood Associates

### **Deer Crossing**

34 Single Homes  
Thorndale, PA  
Lancaster County Builders

### **Earles Lake**

60 Townhomes  
Newtown Square, PA  
Paul Lanni

### **Valley Forge Estates**

51 Single Homes  
Wayne, PA  
Nolen Companies, Inc.

### **Brittany of Bryn Mawr**

29 Single Homes  
Bryn Mawr, PA  
Tom Spano

### **Moria Village**

58 Townhomes  
Aston, PA  
S & S Development Co.

### **Timber Springs**

56 Single Homes  
Exton, PA  
Dan Mullray and  
Tom Galbally

### **Gallagherville Station**

13 Single Homes  
Thorndale, PA  
Lancaster County Builders

### **Fox Chase**

22 Single Homes  
Newtown Square, PA  
Anthony D'Agostino  
and Sam Dixon

### **Ballytore Woods**

13 Single Homes  
Wynnewood PA  
S & S Development Co.

### **Sharpless Farm**

35 Single Homes  
Concordville, PA  
T.V. Spano Development Co.

### **Tall Trees**

25 Single Homes  
West Chester, PA  
Hamilton~Clarke

### **CountryView at Maple Hill**

16 Single Homes  
Malvern, PA  
S & S Development Co.

### **Miley Village**

36 Condominiums  
Aston, PA  
S & S Development Co.

### **Beaumont**

16 Single Homes  
West Chester, PA  
Mantas~Tarquini Construction  
Co.

### **DeepWell**

16 Single Homes  
Norwood, PA  
Bryn Mawr Development Group

### **Indian Springs**

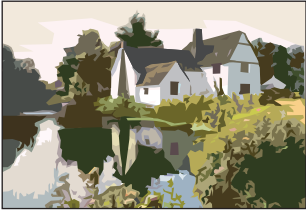
21 Single Homes  
Media, PA  
S & S Development Co.

### **Scarlet Oaks**

14 Single Homes  
Haverford, PA  
Richard Kazigian

**Local, National & International Connections • Licensed in Pennsylvania, New Jersey, Delaware, Maryland, New York, Massachusetts**

321 S Valley Forge Road, Devon, PA 19333 • 610.902.3900 or 800.866.5876 • PrestigeGroup.com



*Prestige Group... Committed to Our Clients*

## **SOLD** – NEW HOME DEVELOPMENTS

### **Idlewilde**

82 Single Homes  
West Chester, PA  
S & S Development Co.

### **Hawthorne Lane**

56 Single Homes Concord, PA  
Harlan Corporation

### **Village at Forge Springs**

13 Building Lots  
King of Prussia, PA  
R & R Development

### **Courts at Longwood**

30 Single Homes  
Pennsbury & Pocopson, PA  
S & S Development Co.

### **Arbordale**

4 Single Homes  
Broomall, PA  
S & S Development Co.

### **Oakwood Crossing "Regency Square"**

78 Single Homes  
Boothwyn, PA  
POML, Inc.

### **Tall Trees at Radley Run**

8 Building Lots  
East Bradford PA  
Woodbury Grove, Inc.

### **Creekside at Radnor**

3 Single Homes  
Radnor, PA  
Town & Country HomeBuilders

### **The Woods at Shelmire**

11 Single Homes  
Downingtown, PA  
Shamona Creek Builders

### **Tanglewood**

5 Single Homes 12 Townhomes  
Newtown Square, PA  
Town & Country HomeBuilders

### **Taylors Run at Red Bridge**

5 Single Homes  
West Chester, PA  
S & S Development Co.

### **The Woods at Springton**

3 Single Homes  
Broomall, PA  
Tectonic Builders

### **Russell Road**

2 Single Homes  
Paoli, PA  
Mark Giubilato

### **Vallebrooke Chase**

75 Single Homes  
Concord/Aston Township, PA  
The Benson Companies

### **Peck Road**

Exton, PA  
Mark Giubilato

### **Tall Trees at Uwchlan Hunt**

16 Single Homes  
Downingtown, PA  
Shamona Creek Builders

### **Tall Trees at Springton**

5 Single Homes  
Broomall, PA  
Tectonic Builders

### **Hunters Creek**

36 Single Homes  
Concord, PA  
The Benson Companies

### **Monteray Woods**

5 Single Homes  
West Chester, PA  
Dixon Builders

### **Village at Crooked Lane**

5 Single Homes  
King of Prussia, PA  
M & N Builders

### **The Woods at New Street**

2 Single Homes  
West Chester, PA  
Dixon Homes LLC

### **The Woods at Edgmont**

2 Single Homes  
Edgmont, PA  
Dixon Homes LLC

### **New Street**

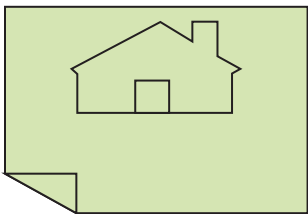
2 Single Homes  
West Chester, PA  
Triple Tree Corporation

### **Hillview**

18 Building Lots  
Yeadon, PA  
Town and Country Builders

**Local, National & International Connections • Licensed in Pennsylvania, New Jersey, Delaware, Maryland, New York, Massachusetts**

321 S Valley Forge Road, Devon, PA 19333 • 610.902.3900 or 800.866.5876 • [PrestigeGroup.com](http://PrestigeGroup.com)



*Prestige Group... Committed to Our Clients*

## **SOLD – LAND FOR DEVELOPMENT**

**Springton Pointe**  
73 Lots  
Newtown Township PA

**Sharpless Farm**  
35 Lots  
Concord Township, PA

**Tall Trees**  
25 Lots  
West Goshen, PA

**CountryView at Maple Hill**  
16 Lots  
Tredyffrin Township, PA

**Miley Village**  
36 Lots  
West Whiteland, PA

**Beaumont**  
16 Building Lots  
Aston, PA

**DeepWell**  
16 Building Lots  
Norwood, PA

**Indian Springs**  
21 Building Lots  
Upper Providence PA

**Idlewilde**  
82 Building Lots  
West Goshen, PA

**Courts at Longwood**  
30 Building Lots  
West Chester, PA

**Village at Forge Springs**  
13 Building Lots  
Upper Merion, PA

**Arbordale**  
4 Building Lots  
Marple, PA

**Cedar Grove Farm**  
146 Building Lots  
Broomall, PA

**Oakwood Crossing  
"Regency Square"**  
65 Lots  
Upper Chichester, PA

**Tall Trees at Radley Run**  
8 Building Lots  
East Bradford, PA

**Brookwood**  
5 Building Lots  
Uwchlan, PA

**Russell Road**  
4 Building Lots  
Paoli, PA

**Peck Road**  
4 Building Lots  
Uwchlan, PA

**Creekside at Radnor**  
3 Building Lots  
Radnor, PA

**Vallebrooke Chase**  
75 Building Lots  
Aston, PA

**Tanglewood**  
13 Building Lots  
Newtown Square, PA

**The Woods at Springton**  
3 Building Lots  
Broomall, PA

**The Woods at Shelmire**  
11 Building Lots  
Uwchlan, PA

**Tall Trees at Uwchlan**  
16 Building Lots  
Uwchlan, PA

**Taylor's Run at Red Bridge**  
5 Building Lots  
West Chester, PA

**Alderbrook**  
21 Lots  
Upper Merion, PA

**Ballinahinch**  
444 Units Planned Residential  
Aston, PA

**Ballytore Woods**  
13 Building Lots  
Wynnewood, PA

**Bridgewater**  
168 Units  
Aston, PA

**Deer Crossing**  
34 Lots  
Caln Township, PA

**Fox Chase**  
22 Lots  
Newtown Square, PA

**Gallagherville Station**  
13 Lots  
Caln Township, PA

**Tryens Run**  
20.6 Acres  
Aston, PA

**Newtown Street Road**  
1.84 Acres  
Broomall, PA

**Timber Springs**  
56 Lots  
Uwchlan, PA

**Nottingham Knollwood**  
102 Building Lots  
Aston, PA

**Moria Village**  
58 Building Lots  
Aston, PA

**Cashel Court**  
198 Building Lots  
Aston, PA

**Wynnewood Valley**  
12 Lots  
Wynnewood, PA

**Cedar Knoll**  
30 Building Lots  
Broomall, PA

**Hunters Creek**  
36 Building Lots  
Concord, PA

**Monteray Woods**  
7 Lots  
West Chester, PA

**Tall Trees at Springton**  
5 Building Lots  
Broomall, PA

**Woods at Yellow Springs**  
5 Lots  
Newtown Square, PA

**Shenton Road**  
46 Acres  
East Bradford, PA

**15+/- Acres**  
Commercial Zoning  
Pilesgrove, New Jersey

**Rt. 40 & Buck Road**  
26 Acres  
Zoned Highway Commercial  
Salem County, New Jersey

**129 Rt. 40**  
19.6 Acres – Zoned Industrial  
Carneys Point, NJ

**2439 N. 3rd. St.**  
Philadelphia, PA